



GeneQuery™ Human T Cell Receptor Signaling Pathway qPCR Array Kit (GQH-TRS) Catalog #GK021

Product Description

ScienCell's GeneQuery™ Human T Cell Receptor Signaling Pathway qPCR Array Kit (GQH-TRS) is designed to facilitate gene expression profiling of 88 key genes involved in T cell receptor signaling pathway. Brief examples of how included genes may be grouped according to their functions are shown below:

- **T cell receptor complex components:** CD3D, CD3E, CD3G
- **Co-receptors:** CD4, CD8A, CD8B
- **Co-inhibitors:** PDCD1, CTLA4
- **Co-stimulators:** ICOS, CD28
- **Kinases:** FYN, ZAP70
- **MAPK pathway:** KRAS, HRAS, NRAS, RAF1, MAP2K1, MAPK1, MAPK3
- **PI3K/AKT pathway:** PI3Ks, AKT1, AKT2
- **IKK/NFKB pathway:** NFKBs, DAG1, BCL10, CARD11, MAP3K7, MALT1, CHUK, IKKBK, IKBKG

GeneQuery™ qPCR array kits are qPCR ready in a 96-well plate format, with each well containing one primer set that can specifically recognize and efficiently amplify a target gene's cDNA. The carefully designed primers ensure that: (i) the optimal annealing temperature in qPCR analysis is 65°C (with 2 mM Mg²⁺, and no DMSO); (ii) the primer set recognizes all known transcript variants of target gene, unless otherwise indicated; and (iii) only one gene is amplified. Each primer set has been validated by qPCR with melt curve analysis, and gel electrophoresis.

GeneQuery™ qPCR Array Kit Controls

Each GeneQuery™ plate contains eight controls (Figure 1).

- Five target housekeeping genes (β -actin, GAPDH, LDHA, NONO, and PPIH), which enable normalization of data.
- The Genomic DNA (gDNA) Control (GDC) detects possible gDNA contamination in the cDNA samples. It contains a primer set targeting a non-transcribed region of the genome.
- Positive PCR Control (PPC) tests whether samples contain inhibitors or other factors that may negatively affect gene expression results. The PPC consists of a predisposed synthetic DNA template and a primer set that can amplify it. The sequence of the DNA template is not present in the human genome, and thus tests the efficiency of the polymerase chain reaction itself.
- The No Template Control (NTC) is strongly recommended, and can be used to monitor the DNA contamination introduced during the workflow such as reagents, tips, and the lab bench.

Kit Components

Component	Quantity	Storage
GeneQuery™ array plate with lyophilized primers	1	4°C or -20°C
Optical PCR plate seal	1	RT
Nuclease-free H ₂ O	2 mL	4°C

Additional Materials Required (Materials Not Included in Kit)

Component	Recommended
Reverse transcriptase	MultiScribe Reverse Transcriptase (Life Tech, Cat. #4311235)
cDNA template	Customers' samples
qPCR master mix	FastStart Essential DNA Green Master (Roche, Cat. #06402712001)

Quality Control

All the primer sets are validated by qPCR with melt curve analysis. The PCR products are analyzed by gel electrophoresis. Single band amplification is confirmed for each set of primers.

Product Use

GQH-TRS is for research use only. It is not approved for human or animal use, or for application in clinical or *in vitro* diagnostic procedures.

Shipping and Storage

The product is shipped at ambient temperature. Upon receipt, the plate should be stored at 4°C and is good for up to 12 months. For long-term storage (>1 year), store the plate at -20°C in a manual defrost freezer.

Procedures

Note: The primers in each well are lyophilized.

1. Prior to use, allow plates to warm to room temperature.
2. Briefly centrifuge at 1,500x g for 1 minute before slowly peeling off the seal.
3. Prepare 20 μ l PCR reactions for one well as shown in Table 1.

Table 1

cDNA template	0.2 – 250 ng
2x qPCR master mix	10 μ l
Nuclease-free H ₂ O	variable
Total volume	20 μl

Important: *Only use polymerases with hot-start capability to prevent possible primer-dimer formation. Only use nuclease-free reagents in PCR amplification.*

4. Add the mixture of 2x qPCR master mix, cDNA template, and nuclease-free H₂O to each well containing the lyophilized primers. Seal the plate with the provided optical PCR plate seal.

Important: *In NTC control well, do NOT add cDNA template. Add 2x qPCR master mix and nuclease-free H₂O only.*

5. Briefly centrifuge the plates at 1,500x g for 1 minute at room temperature. For maximum reliability, replicates are strongly recommended (minimum of 3).
6. For PCR program setup, please refer to the instructions of the master mix of the user's choice. We recommend a typical 3-step qPCR protocol for a 200nt amplicon:

Three-step cycling protocol

Step	Temperature	Time	Number of cycles
Initial denaturation	95°C	10 min	1
Denaturation	95°C	20 sec	40
Annealing	65°C	20 sec	
Extension	72°C	20 sec	
Data acquisition	Plate read		
<i>Recommended</i>	<i>Melting curve analysis</i>		1
Hold	4°C	Indefinite	1

7. (Optional) Load the PCR products on 1.5% agarose gel and perform electrophoresis to confirm the single band amplification in each well.

Figure 1. Layout of GeneQuery™ qPCR array kit controls.

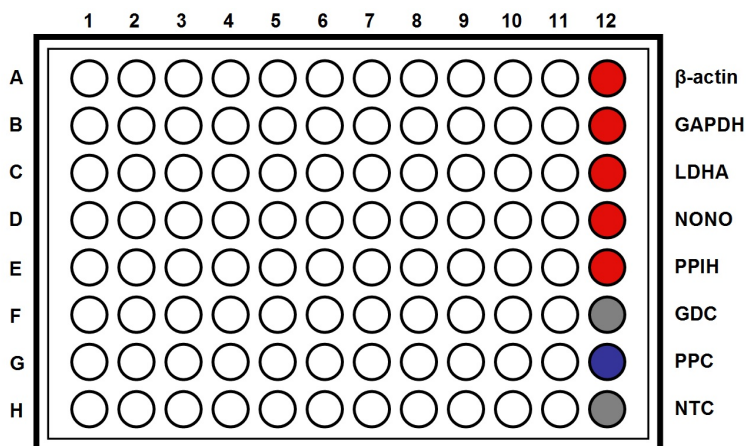


Table 2. Interpretation of control results:

<i>Controls</i>	<i>Results</i>	<i>Interpretation</i>	<i>Suggestions</i>
Housekeeping gene controls	Variability of a housekeeping gene's Cq value	The expression of the housekeeping gene is variable in samples; cycling program is incorrect	Choose a constantly expressed target, or analyze expression levels of multiple housekeeping genes; use correct cycling program and make sure that all cycle parameters have been correctly entered
gDNA Control (GDC)	Cq \geq 35	No gDNA detected	N/A
	Cq < 35	The sample is contaminated with gDNA	Perform DNase digestion during RNA purification step
Positive PCR Control (PPC)	Cq > 30; or The Cq variations > 2 between qPCR Arrays.	Poor PCR performance; possible PCR inhibitor in reactions; cycling program incorrect	Eliminate inhibitor by purifying samples; use correct cycling program and make sure that all cycle parameters have been correctly entered
No Template Control (NTC)	Positive	DNA contamination in workflow	Eliminate sources of DNA contamination (reagents, plastics, etc.)

Figure 2. A typical amplification curve showing the amplification of a qPCR product.

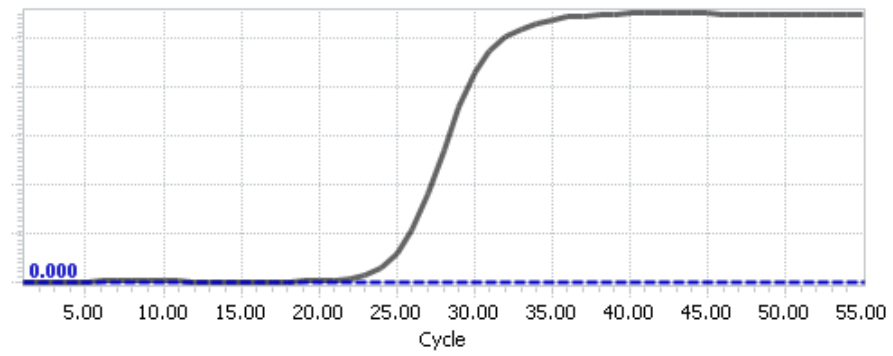
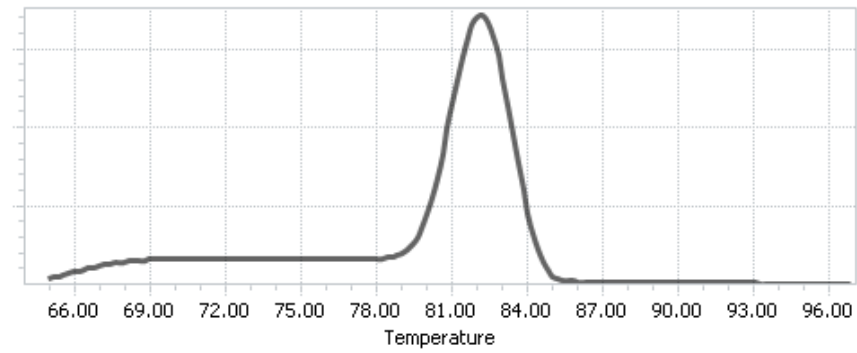


Figure 3. A typical melting peak of a qPCR product.



Quantification Method: Comparative $\Delta\Delta Cq$ (Quantification Cycle Value) Method

1. **Note:** Please refer to your qPCR instrument's data analysis software for data analysis. The method provided here serves as guidance for quick manual calculations.

You can use one or more housekeeping genes as a reference to normalize samples.

Important: We highly recommend using all 5 housekeeping genes included in this kit, β -actin, GAPDH, LDHA, NONO, and PPIH.

2. For a single housekeeping gene, ΔCq (ref) is the quantification cycle number change for that housekeeping gene (HKG) between an experimental sample and control sample.

$$\Delta Cq \text{ (ref)} = Cq \text{ (HKG, experimental sample)} - Cq \text{ (HKG, control sample)}$$

When using multiple housekeeping genes as a reference, we recommend normalizing using the geometric mean [1] of the expression level change, which is the same as normalizing using the arithmetic mean of ΔCq of the selected housekeeping genes.

$\Delta Cq \text{ (ref)} = \text{average} (\Delta Cq \text{ (HKG1)}, \Delta Cq \text{ (HKG2)}, \dots, \Delta Cq \text{ (HKG n)})$ (n is the number of housekeeping genes selected)

If using all 5 housekeeping genes included in this kit, β -actin, GAPDH, LDHA, NONO, and PPIH, use the following formula:

$$\Delta Cq \text{ (ref)} = (\Delta Cq(\beta\text{-actin}) + \Delta Cq(\text{GAPDH}) + \Delta Cq(\text{LDHA}) + \Delta Cq(\text{NONO}) + \Delta Cq(\text{PPIH})) / 5$$

Note: $\Delta Cq \text{ (HKG)} = Cq \text{ (HKG, experimental sample)} - Cq \text{ (HKG, control sample)}$, and $\Delta Cq \text{ (HKG)}$ value can be positive, 0, or negative.

3. For any of your genes of interest (GOI),

$$\Delta Cq \text{ (GOI)} = Cq \text{ (GOI, experimental sample)} - Cq \text{ (GOI, control sample)}$$

$$\Delta\Delta Cq = \Delta Cq \text{ (GOI)} - \Delta Cq \text{ (ref)}$$

$$\text{Normalized GOI expression level fold change} = 2^{-\Delta\Delta Cq}$$

References

[1] Vandesompele J, De Preter K, Pattyn F, Poppe B, Van Roy N, De Paepe A, Speleman F. (2002) "Accurate normalization of real-time quantitative RT-PCR data by geometric averaging of multiple internal control genes." *Genome Biol.* 3(7): 1-12.

Example: Comparative $\Delta\Delta Cq$ (Quantification Cycle Value) Method

Table 3. Cq (Quantification Cycle) values of 2 genes-of-interest and 5 housekeeping genes obtained for experimental and control samples.

Samples	Genes of Interest		Housekeeping Genes				
	GOI1	GOI2	<i>β-actin</i>	<i>GAPDH</i>	<i>LDHA</i>	<i>NONO</i>	<i>PPIH</i>
Experimental	21.61	22.19	17.16	17.84	20.12	19.64	26.40
Control	33.13	26.47	18.20	18.48	20.57	19.50	26.55

$$\begin{aligned}\Delta Cq(\text{ref}) &= (\Delta Cq(\beta\text{-actin}) + \Delta Cq(\text{GAPDH}) + \Delta Cq(\text{LDHA}) + \Delta Cq(\text{NONO}) + \Delta Cq(\text{PPIH})) / 5 \\ &= ((17.16 - 18.20) + (17.84 - 18.48) + (20.12 - 20.57) + (19.64 - 19.50) + (26.40 - 26.55)) / 5 \\ &= -0.43\end{aligned}$$

$$\begin{aligned}\Delta Cq(\text{GOI1}) &= 21.61 - 33.13 \\ &= -11.52\end{aligned}$$

$$\begin{aligned}\Delta Cq(\text{GOI2}) &= 22.19 - 26.47 \\ &= -4.28\end{aligned}$$

$$\begin{aligned}\Delta\Delta Cq(\text{GOI1}) &= \Delta Cq(\text{GOI1}) - \Delta Cq(\text{ref}) \\ &= -11.52 - (-0.43) \\ &= -11.09\end{aligned}$$

$$\begin{aligned}\Delta\Delta Cq(\text{GOI2}) &= \Delta Cq(\text{GOI2}) - \Delta Cq(\text{ref}) \\ &= -4.28 - (-0.43) \\ &= -3.85\end{aligned}$$

$$\begin{aligned}\text{Normalized GOI1 expression level fold change} &= 2^{-\Delta\Delta Cq(\text{GOI1})} \\ &= 2^{11.09} \\ &= 2180\end{aligned}$$

$$\begin{aligned}\text{Normalized GOI2 expression level fold change} &= 2^{-\Delta\Delta Cq(\text{GOI2})} \\ &= 2^{3.85} \\ &= 14.4\end{aligned}$$

Conclusion: Upon treatment, expression level of GOI1 increased 2,180 fold, and expression level of GOI2 increased 14.4 fold.



**GeneQuery™ Human T Cell Receptor Signaling Pathway qPCR Array Kit
(GQH-TRS)
Catalog #GK021**

GeneQuery™ Human T Cell Receptor Signaling Pathway qPCR Array Plate Layout*
(*8 controls* in Bold and Italic)

	1	2	3	4	5	6	7	8	9	10	11	12
A	AKT1	CD274	CD8A	DYRK1A	HRAS	MALT1	NCK1	NFKBIE	PDPK1	PPP3CB	RELA	<i>β-actin</i>
B	AKT2	CD28	CD8B	DYRK2	ICOS	MAP2K1	NCK2	NRAS	PIK3CA	PPP3R1	SOS1	<i>GAPDH</i>
C	BCL10	CD3D	CDC42	FOS	IKBKB	MAP2K7	NFATC1	NRON	PIK3CB	PRKCA	SOS2	<i>LDHA</i>
D	CALM1	CD3E	CDK4	FYN	IKBKG	MAP3K7	NFATC2	PAK1	PIK3R1	PRKCQ	TEC	<i>NONO</i>
E	CARD11	CD3G	CHUK	GRAP2	ITK	MAP3K8	NFATC3	PAK2	PIK3R2	PTCRA	TNF	<i>PPIH</i>
F	CBL	CD4	CTLA4	GRB2	JUN	MAPK1	NFKB1	PAK3	PIK3R3	PTPN6	VAV1	<i>GDC</i>
G	CBLB	CD80	DAG1	GSK3A	KRAS	MAPK3	NFKBIA	PAK4	PLCG1	RAF1	VAV2	<i>PPC</i>
H	CBLC	CD86	DLG1	GSK3B	LCP2	MAPK9	NFKBIB	PDCD1	PPP3CA	RASGRP1	ZAP70	<i>NTC</i>

* gene selection may be updated based on new research and development

Appendix. Plate type choice chart.

Plate type A

Brand	Model	kit catalog #
ABI / Life Tech	ABI 5700	GK021-A
	ABI 7000	GK021-A
	ABI 7300	GK021-A
	ABI 7500	GK021-A
	ABI 7700	GK021-A
	ABI 7900 HT	GK021-A
	QuantStudio	GK021-A
	ViiA 7	GK021-A
Bio-Rad	Chromo4	GK021-A
	iCycler	GK021-A
	iQ5	GK021-A
	MyiQ	GK021-A
	MyiQ2	GK021-A
Eppendorf / Life Tech	Matercyler ep realplex 2	GK021-A
	Matercyler ep realplex 4	GK021-A
Stratagene	MX3000P	GK021-A
	MX3005P	GK021-A

Plate type B

Brand	Model	kit catalog #
ABI / Life Tech	ABI 7500 Fast	GK021-B
	ABI 7900 HT Fast	GK021-B
	QuantStudio Fast	GK021-B
	StepOnePlus	GK021-B
	ViiA 7 Fast	GK021-B
Bio-Rad	CFX Connect	GK021-B
	CFX96	GK021-B
	DNA Engine Opticon 2	GK021-B
Stratagene	MX4000	GK021-B

Plate type C

Brand	Model	kit catalog #
Roche	Lightcycler 96	GK021-C
	Lightcycler 480 (96-well)	GK021-C